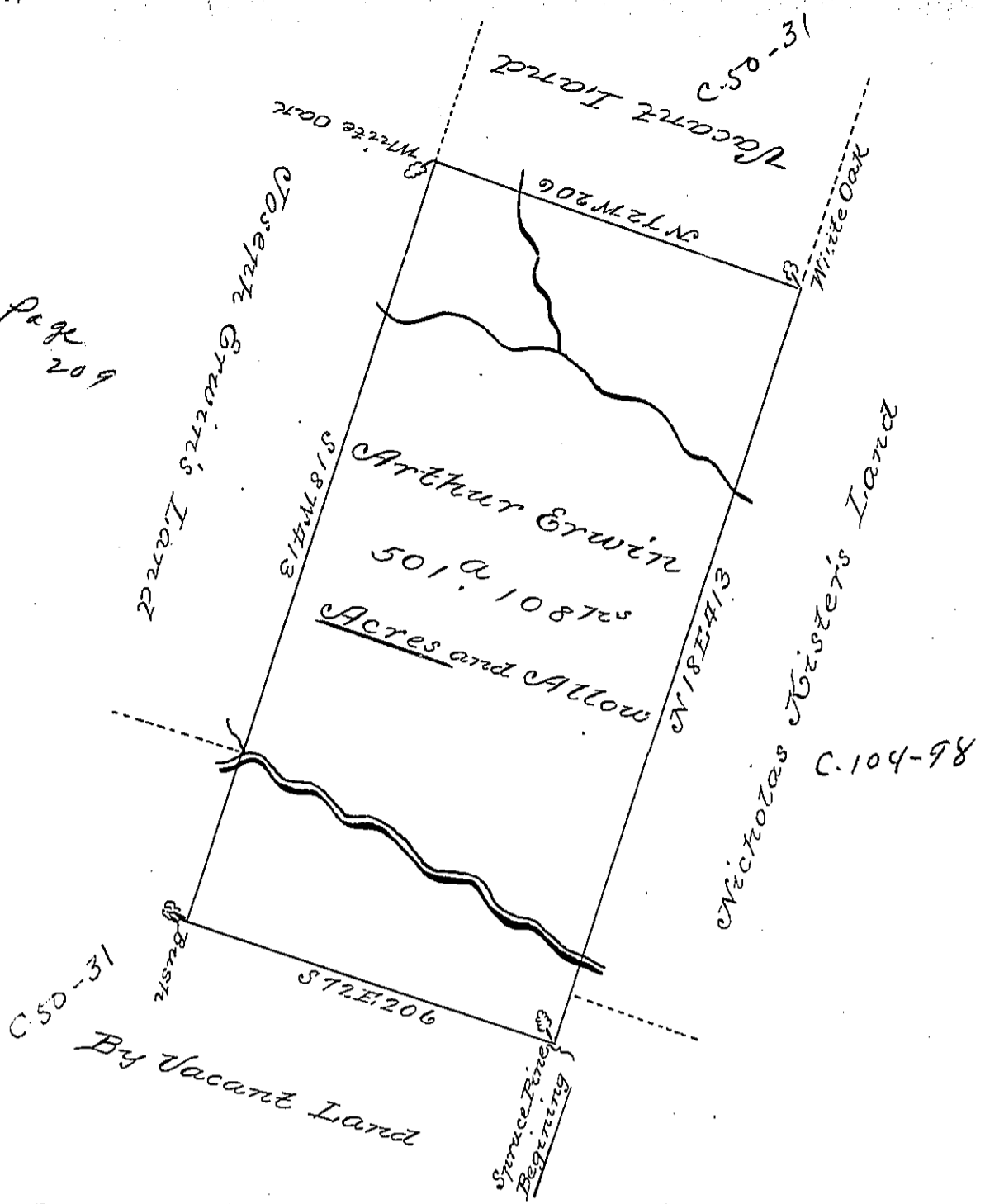


Page 209



The Draught of a Tract of Land called _____
 situate on Erwin's Run in District N^o 18 in the
 County of Northumberland; containing five hun-
 dred and one acres 108 Perches with usual allow-
 ance. Surveid the 9th day of August Anno Dom:
 1785 in Pursuance of Warrant No. 397 dated at Phil-
 ad. the 17th day of May Anno Dom: 1785, to Arthur
 Erwin;

To John Lickers Esq^r }
 of Pennsylvania } Wm Moaday

IN TESTIMONY that the above is a copy of the original remaining on file in the
 Department of Internal Affairs of Pennsylvania, made con-
 formably to an Act of Assembly approved the 16th day of
 February, 1833, I have hereunto set my Hand and caused
 the Seal of said Department to be affixed at Harrisburg, this

seventh day of September 1897

James W. Patton
 Secretary of Internal Affairs.